

# Mabel

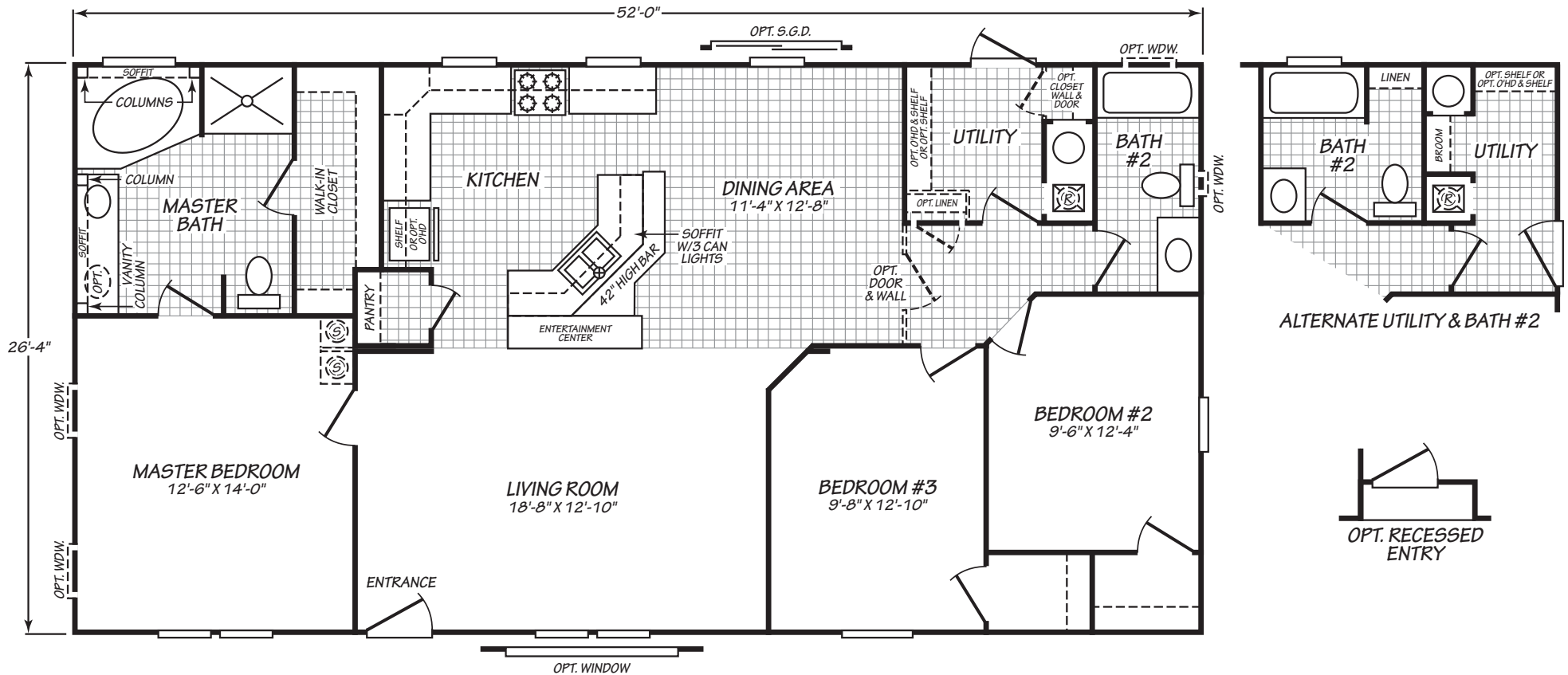
Spring Hill II Series



# FactorySelectHomes

3 Bedrooms, 2 Baths  
Approx. 1,369 Sq. Ft.

Last Updated: 9-21-18



FactorySelectHomes

19280 Cortez Blvd.  
Brooksville, FL 34601  
1-800-716-6337

[www.FactorySelectHomes.com](http://www.FactorySelectHomes.com)

For Detailed Directions See Map On Our Website



I authorize Factory Expo Home Centers to build my house, per this plan.

X \_\_\_\_\_

Customer Signature/Date

Important: Due to our policy of constant improvement, all information in our brochures may vary from actual home. The right is reserved to make changes at any time, without notice or obligation, in colors, materials, specifications, processes, and models. All dimensions and square footage calculations are nominal and approximate figures. Please check with your sales person for specific and current information.